

Quicke

The New Powergrab Series

Discover what's behind it



Powergrab L+

EFFICIENT BUCKET GRAB DESIGNED FOR SILAGE HANDLING WITH LARGE FRONT LOADERS, TELEHANDLERS AND WHEEL LOADERS

- Bucket grab for Silage handling.
- For use with 3 - 5,5 tons lift capacity material handlers.
- Compatible with Z-link loaders.

POWERGRAB L+	200	220	240	260
Width, cm	200	220	240	260
Bucket depth, cm	100	100	100	100
Height closed, cm	124	124	124	124
Opening height, cm	199	199	199	199
Grabbed volume, m ³	1.60	1.75	1.95	2.10
Weight*, kg	917	957	1060	1097

* without Bolt on Hooks

Powergrab XL+

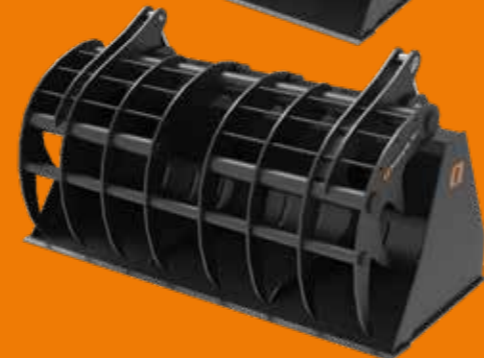
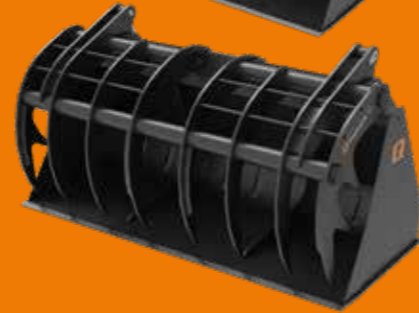
HIGH-CAPACITY BUCKET GRAB DESIGNED FOR SILAGE HANDLING WITH LARGE TELEHANDLERS AND WHEEL LOADERS

- Bucket grab for Silage handling.
- For use with 5 - 10 tons lift capacity material handlers.
- Compatible with Z-link loaders.

POWERGRAB XL+	240	260	280	295
Width, cm	245	265	285	300
Bucket depth, cm	116	116	116	116
Height closed, cm	139	139	139	139
Opening height, cm	213	213	213	213
Grabbed volume, m ³	2.45	2.65	2.85	3.00
Weight*, kg	1336	1380	1425	1458

* without Bolt on Hooks

Both implements are available with Bolt on Hook system M24 and optional bolt on cutting edge.



THE POWERGRAB XL+

Maximum efficient implement for silage removal.



Scan to
find out more!



Quicke

Member of JOST Agriculture

Ålö AB

Member of JOST Agriculture

Brännland 300, SE-901 37 Umeå, Sweden

Tel: +46 (0)90 17 05 00

marketing@alo.se

www.quicke.nu